

Parti di ricambio

Spart part list

Descrizione Description	Mod. Cod. Rev. Date S.N.	HL 0400 08U.0400.G.0 00	HL 0400 EKT 08U.0400AG.0 00 MAR-05 05M-2706	HL 0480 08U.0480.G.0 00	HL 0480 EKT 08U.0480AG.0 00 MAY-05 05M-5435
	Qtà	Cod.	Cod.	Cod.	Cod.
SPIA AL SILICAGEL 1/8" (DE) Window with silicagel 1/8" (DE)	B	143.0035.01.00		143.0035.01.00	
CORPO FILTRO FF 3/8" x 1/8" (F1) Filterbody FF (F1)	C	122.0051.01.00		122.0051.01.00	
SILENZIATORE (S/1) Silencer (S/1)	2 Pc. B	630.0084.00.00		630.0084.00.00	
VALVOLA PNEUM a 90°FF (3A1-3B1) Pneumatic -Body valve at 90°FF (3A1-3B1)	2 Pc. B	140.0082.00.00		140.0082.00.00	
KIT RICAMBIO GUARNIZIONI (3A1-3B1) Gaskets replacement KIT (3A1-3B1)	2 Pc. A	620.0142.01.00		620.0142.01.00	
VALVOLA RITEGNO USCITA (4A-4B) Outlet check valve (4A-4B)	2 Pc. B	140.0086.00.00		140.0086.00.00	
CESTELLO FILTRANTE (F) Inox-nylon Filter (F)	4 Pc. A	630.0064.00.00		630.0064.00.00	
VALVOLA PNEUM. a 90° IN (2A-2B) Pneumatic Group valve IN (2A-2B)	2 Pc. B	140.0080.01.00		140.0080.01.00	
KIT RICAMBIO GUARNIZIONI (2A-2B) Gaskets replacement KIT (2A-2B)	2 Pc. A	620.0143.01.00		620.0143.01.00	
CARICA ADSORBENTE - TOTALE Kg. Adsorbent charge - total Kg.	A	(Kg. 131) 630.0059.06.00-00	(Kg. 145) 630.0059.06.00-01	(Kg. 189) 630.0059.07.00-00	(Kg. 198) 630.0059.07.00-01
SCHEDA ELETTRONICA Electronic board	B	305.0051.01.00	305.0057.01.00	305.0051.01.00	305.0057.01.00
ORIFIZIO TARATO (V3) Calibrated orifice (V3)	C	136.0225.05.00		136.0225.02.00	
ELETTROVALVOLA COMPLETA (EVA-EVB) Solenoid valve complete (EVA-EVB)	B	240.0079.00.00		240.0079.00.00	
MANOMETRO (PI-A / PI-B) Manometer (PI-A / PI-B)	2 Pc. C	143.0034.00.00	143.0046.00.00	143.0034.00.00	143.0046.00.00
VALVOLA SCARICO RAPIDO (SR) Quick exhaust valve (SR)	2 Pc. B	141.0009.00.00		141.0009.00.00	
QUADRO ELETTR. COMPLETO (QC) Electrical box complete (QC)	C	906.0126.01.00	906.0194.01.00	906.0126.01.00	906.0194.01.00

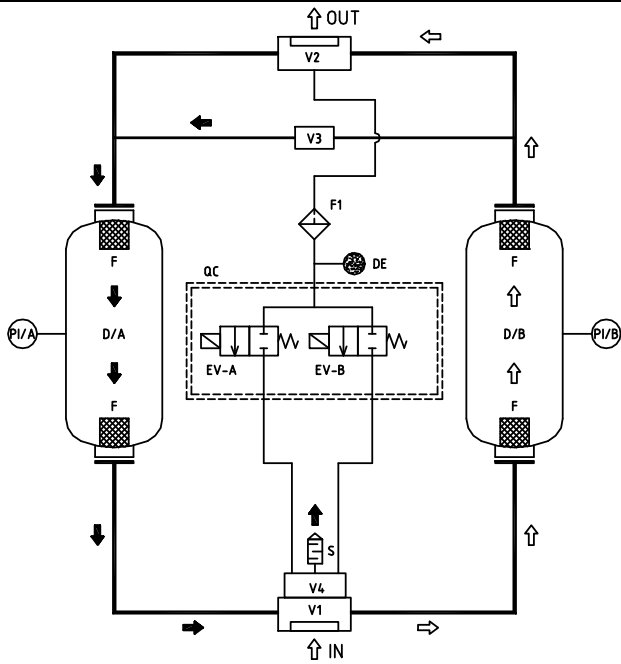
SUGGESTED SPARE PARTS / RICAMBI CONSIGLIATI

A = VERY IMPORTANT / MOLTO IMPORTANTE

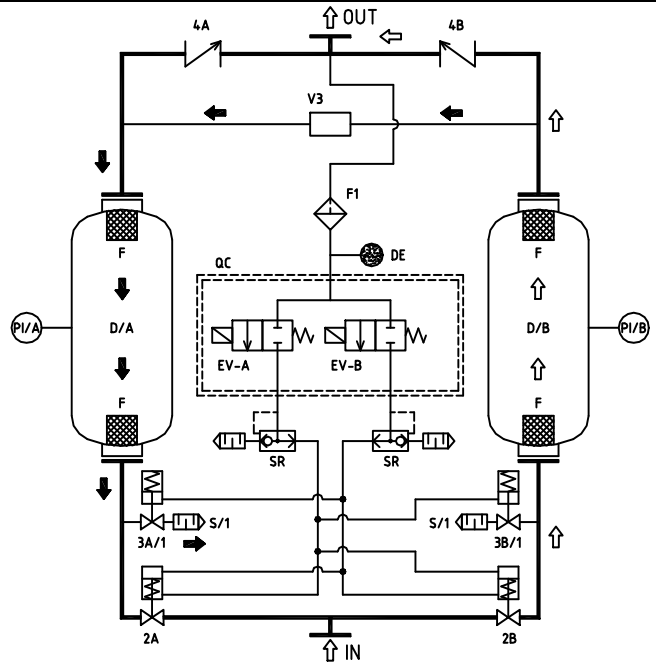
B = IMPORTANT / IMPORTANTE

C = SUGGESTED / SUGGERITO

DIAGRAMMI DI FLUSSO - SYSTEM DIAGRAMS - FLUSSDIAGRAMM



Mod. 40 - 200 Nmc/h
Mod. 25 - 125 cfm



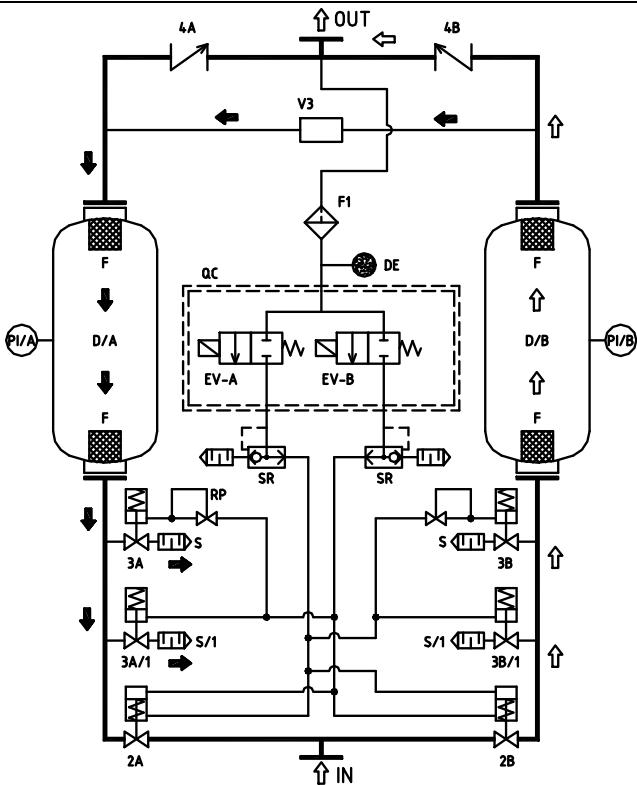
Mod. 400 - 480 Nmc/h
Mod. 250 - 300 cfm



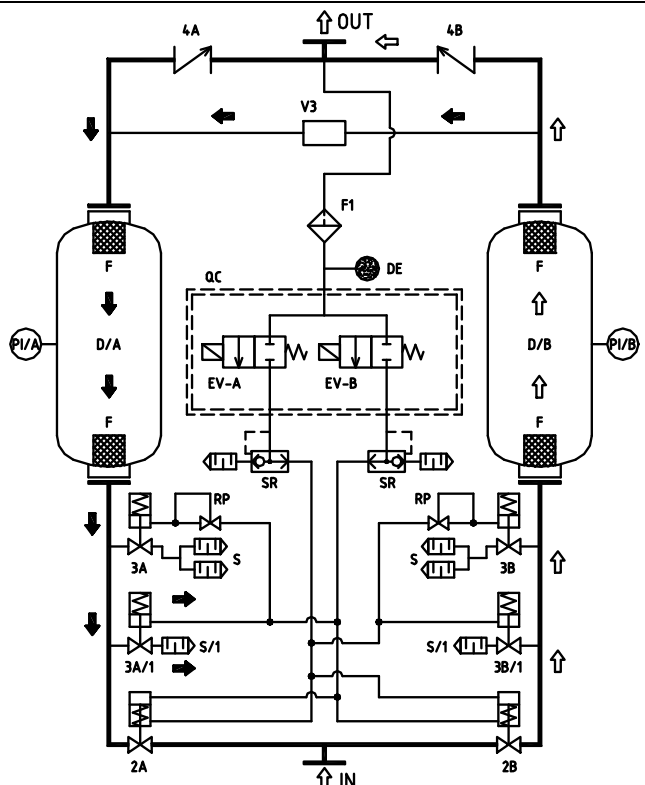
IN RIGENERAZIONE
REGENERATION



IN ESERCIZIO
OPERATING



Mod. 750 - 900 Nmc/h
Mod. 450 - 550 cfm



Mod. 1200 - 1800 Nmc/h
Mod. 720 - 1050 cfm

D/A D/B ADSORBER VESSEL
F INTERNAL FILTERS
V1 INLET VALVE
V3 PURGING DEVICE
V4 DECOMPRESSION VALVE
F1 SINTERED FILTER
DE EFFICIENCY INDICATOR
RP PRESSURE REGULATOR

S - S1 SILENCER
2A 2B INLET PNEUMATIC VALVES
3A 3B PRE DECOMPRESSION VALVES
PCV PRESSURE REDUCING
EV-A/EV-B PILOT ELECTROVALVES
PI/A PI/B MANOMETERS
SR AIR DISCHARGE
QC COMMAND PANEL